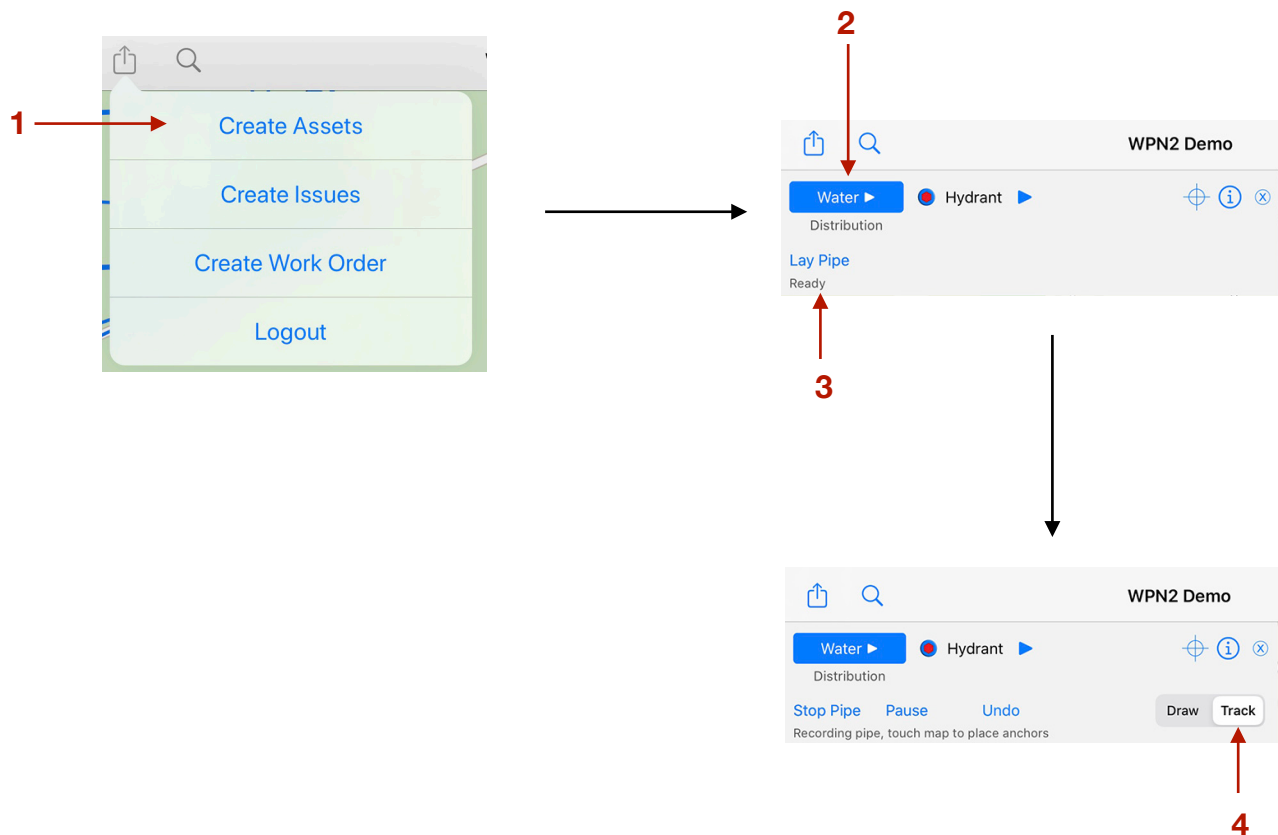


# WPN: Laying New Pipe by Tracking

Follow these instructions to track pipe on the screen by following you if you're walking or driving along the path of the pipe.

## Step 1: Setup for Laying New Pipe

1. Tap on the **Action** button in the top left of the **Map** view, then tap **Create Assets**.
2. Select the type of infrastructure by tapping on the Infrastructure button until the infrastructure you want, like water or storm, is shown.
3. Tap **Lay Pipe** to start laying pipe on the map.
4. Tap to select Track, if needed.



## Step 2: Tracking the New Pipe

5. Begin walking or driving. As you move along the pipe path, an anchor is placed on the map every 30 feet or every 2 seconds, whichever comes first.
6. Tap **Pause** to temporarily stop laying pipe in order to place other assets on the map as you come to them, such as valves, curb stops or hydrants. Tap **Resume** to continue laying pipe.
7. If you make a mistake, tap **Undo** to delete the last pipe section.
8. Tap **Stop Pipe** when you have completed laying the pipe.

