

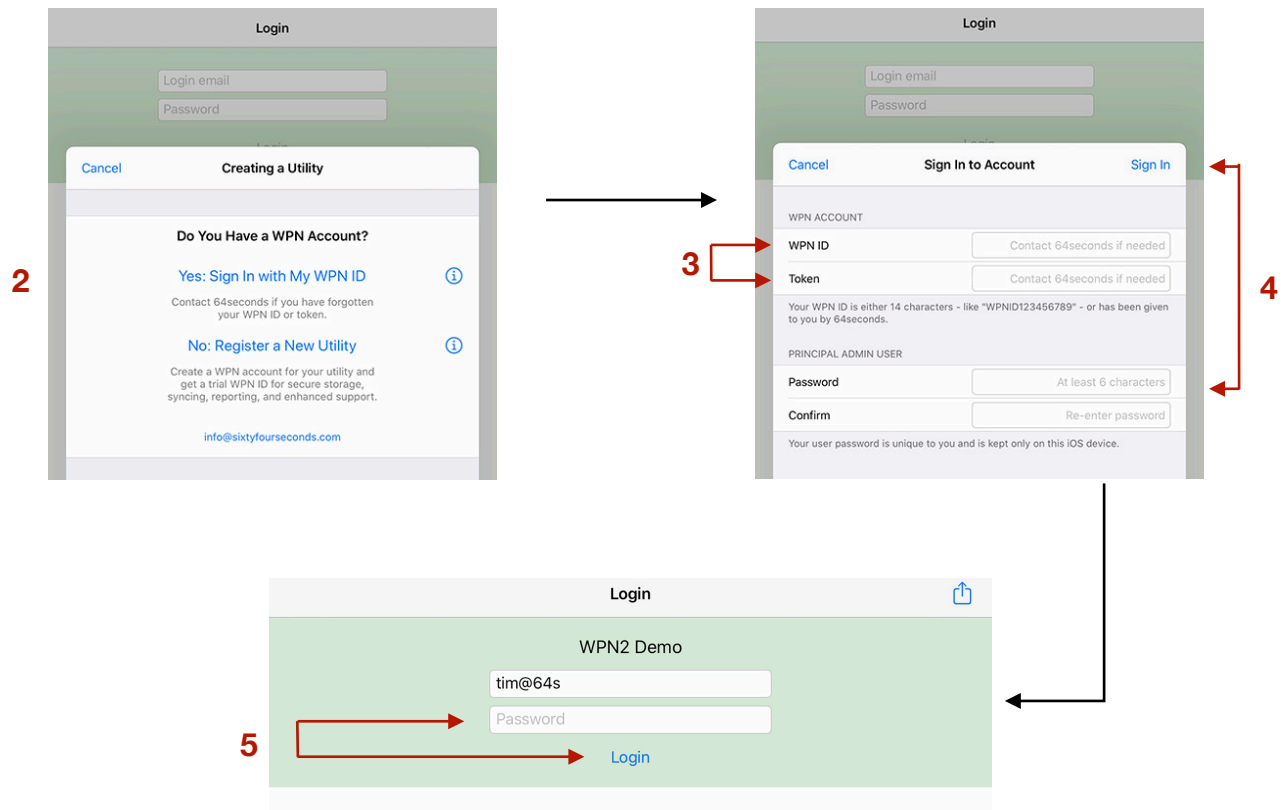
WPN Guide: Quick Start Guide

Step 1: iPad/iPhone Set-up

If you ordered your iPad from 64seconds, the App is already set up and ready to use. To set up additional iPad/iPhone devices follow these easy steps. WPN can run on the following iOS devices: iPad, iPod touch, iPhone using iOS 12 or later. To find the iOS version on your device go to: **SETTINGS => GENERAL => ABOUT** .

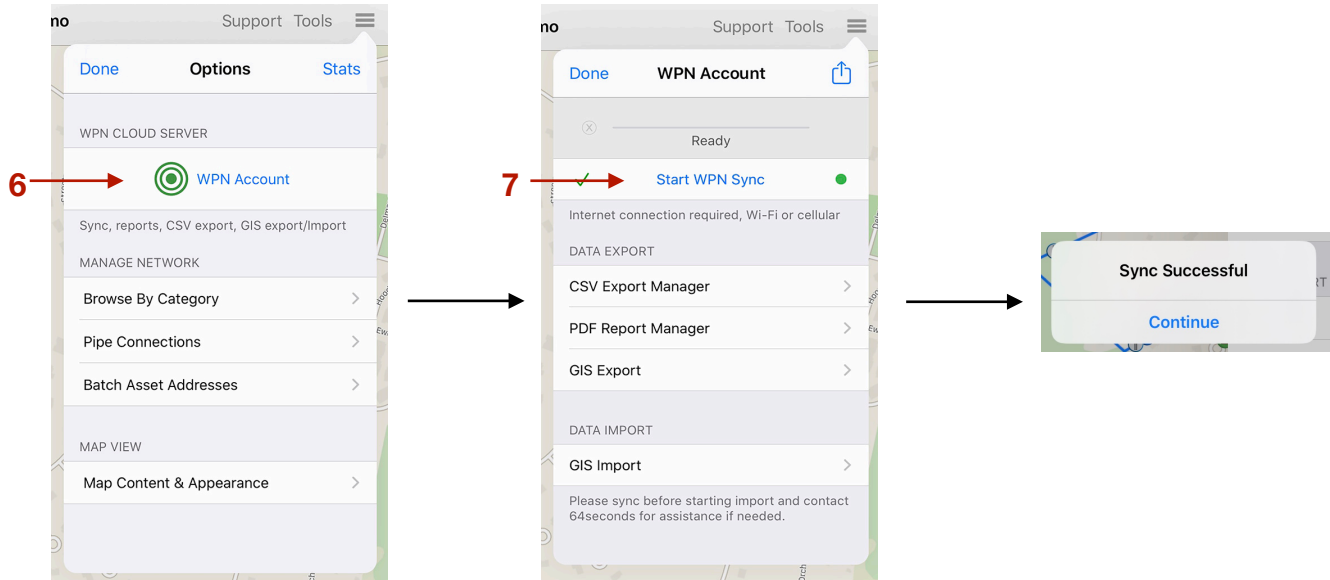
Step 2: Installing the App & Logging In

1. If you haven't already, search for "WPN2" in the Apple App Store, tap the Cloud symbol to download, then tap **OPEN** to start the WPN2 app. **Step 2:** Once it has downloaded, tap "Install".
2. After installation you will see the **Creating a Utility** screen. Tap **Yes: Sign In with My WPN ID**. *Note: If you have not registered with 64seconds, tap **No, Register a New Utility** and follow the registration instructions.*
3. In the **Sign in to Account** screen, enter your new WPN ID and Token.
4. Enter a password of your choosing for this iPad (6 characters or more), re-enter, then tap **Sign In**.
5. In the **Login** screen, the Principal Admin user's login email is already filled in. Enter the password you just created for the Principal Admin user and tap **Login**.



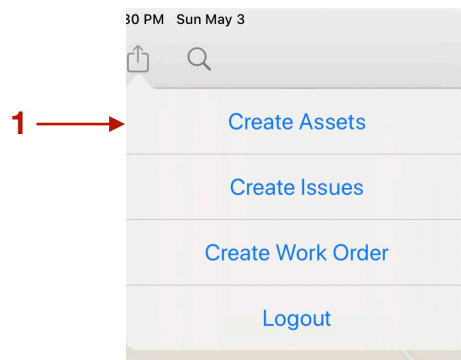
Step 3: Syncing

- In the **Map** screen, tap on the Options button (top right).
- In the **Options** screen, tap **WPN Account**.
- In the **WPN Account** screen, tap **Start WPN Sync**. It may take a few seconds before the button is enabled. When you see the Sync Successful message, tap **Continue**.

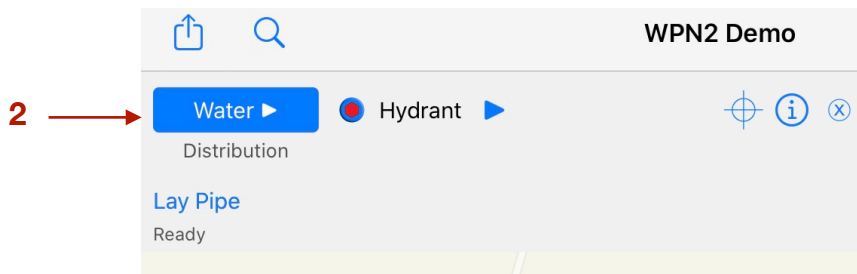


Creating/Adding Assets

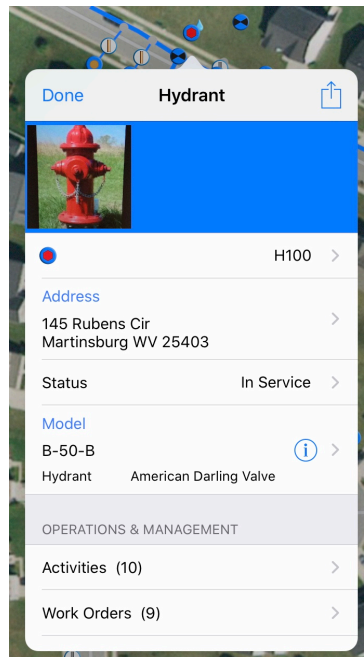
- Tap on the Actions button in the top left of the Map view. Then, tap **Create Assets**.



2. Tap on the colored button to change the infrastructure (Water, Waste, etc.). Tap on the blue arrowhead ► to scroll through asset types for that infrastructure.




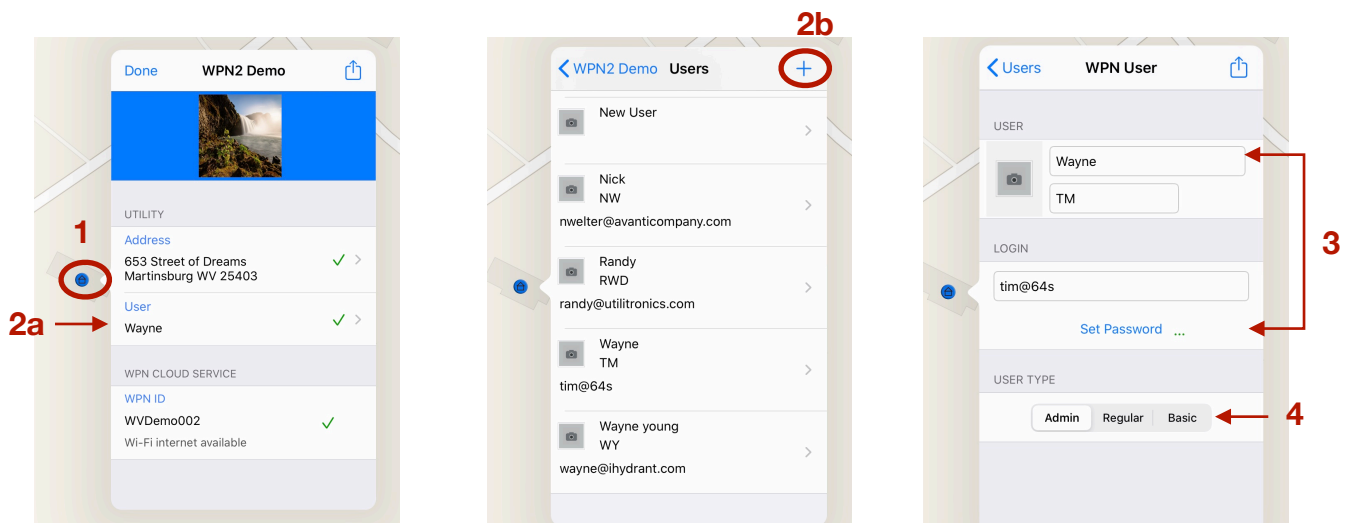
3. Tap the location on the map where you want to place the asset icon. Then, tap the asset icon you just placed and the Asset view will pop up where you can input information about the asset along with photos.



Adding New Users

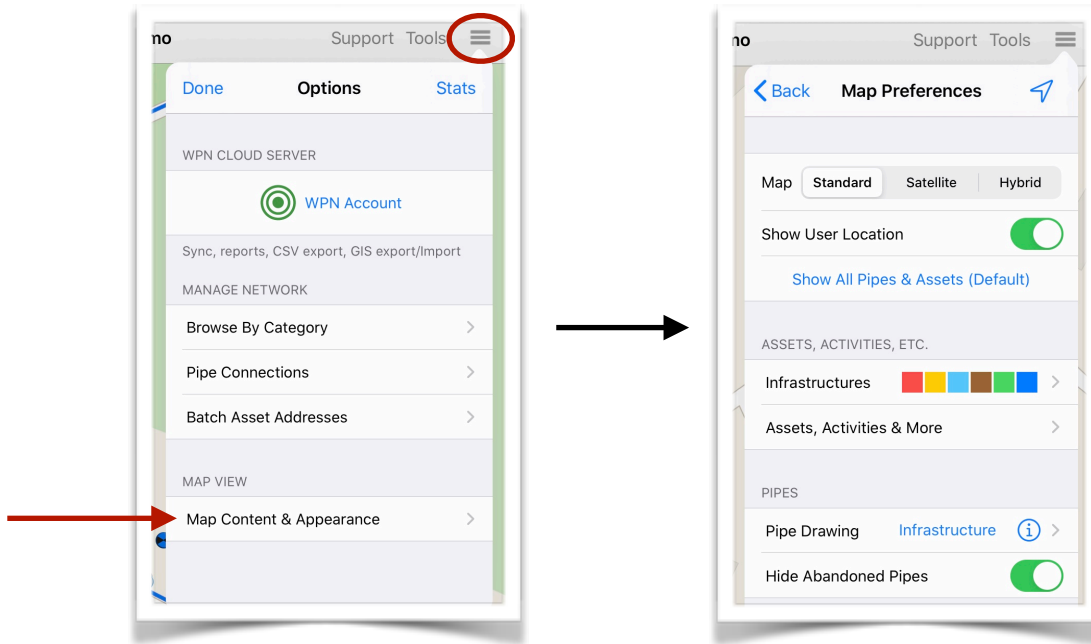
Note: Only Principal Admin Users have the permission to add or delete users.

1. Tap on the Utility icon.  If the icon is not readily noticeable on the map, search for “Utility” then tap on the name of the Utility.
2. Tap on the Users row in the Utility view. Then, tap the ‘+’ and the User view will open allowing you to enter the User’s name, initials and email address.
3. Tap on **Set Password**, then enter the new password and tap **Submit**.
4. Select the type of user. Admin User = Full Permission; Regular User = Restricted Permission; Basic User = Read-only Permission. Tap **Done**.



Map View

1. Tap on the Options button in the top right corner.
2. Tap Map Content & Appearance. Select the Map Preferences you prefer.



WaterPoint Leak Detection Tools

WaterPoint LNC and WaterPoint PLD can be used inside WaterPoint Network with the ability to mark leaks and archive recordings.

