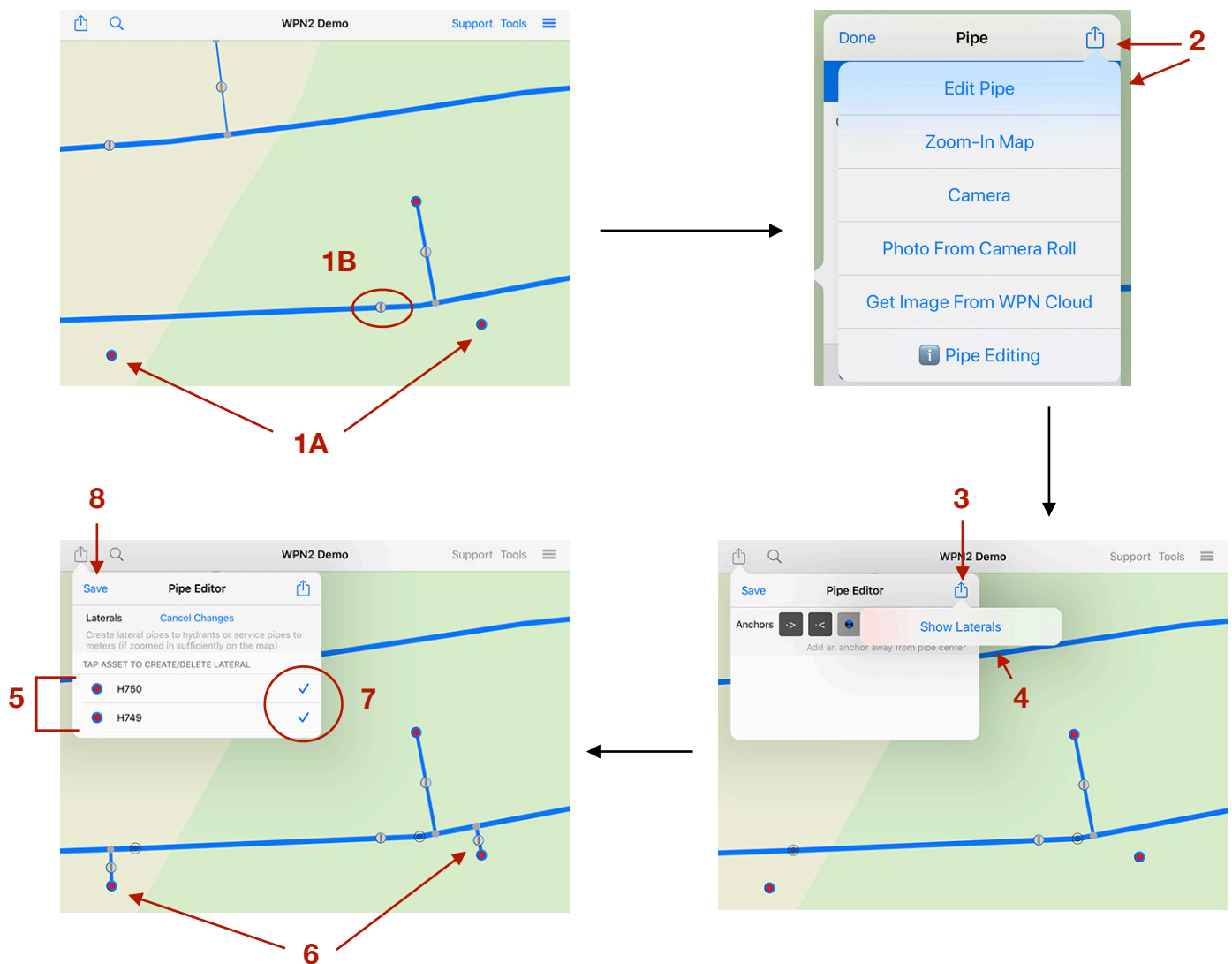


WPN: Creating Pipe Laterals Automatically

Creating Pipe Laterals to Assets a Few at a Time

1. After new assets have been added to the Map view (1A), tap on the Pipe icon (1B).
2. Tap on the Action button in the top right of the Pipe view. Then, tap **Edit Pipe** button.
3. Tap on the Action button in the top right of the Pipe Edit view.
4. Tap the **Show Laterals** button.
5. In the Pipe Editor view, you will see a list of the closest assets to the selected pipe.
6. Tap on the asset(s) that you want to connect to the pipe with a lateral and laterals will be automatically extended from the asset to the pipe.
7. A blue check will appear next to the asset(s) you have connected to. *Note: The pipe will automatically join at a right angle.*
8. Tap **Save** to save the new laterals. All pipe to pipe connections will appear as silver nodes.



Creating Laterals Automatically System-wide

1. Tap on the Options button.
2. Tap on the Pipe Connections button in the Options view.
3. In the Connections view, you will see a selection of assets that can be automatically connected to mains via service pipes or laterals. For example, there are 120 hydrants that are connected to the mains via laterals. Tap on the Action button in the Connections view, then tap **Create Hydrant Laterals** to connect more hydrants that may have been added recently.
4. After the laterals have been created you will see the number of connected hydrants has increased.
5. Tap on the Hydrants row to see the list of hydrants that are connected to pipes via laterals.

