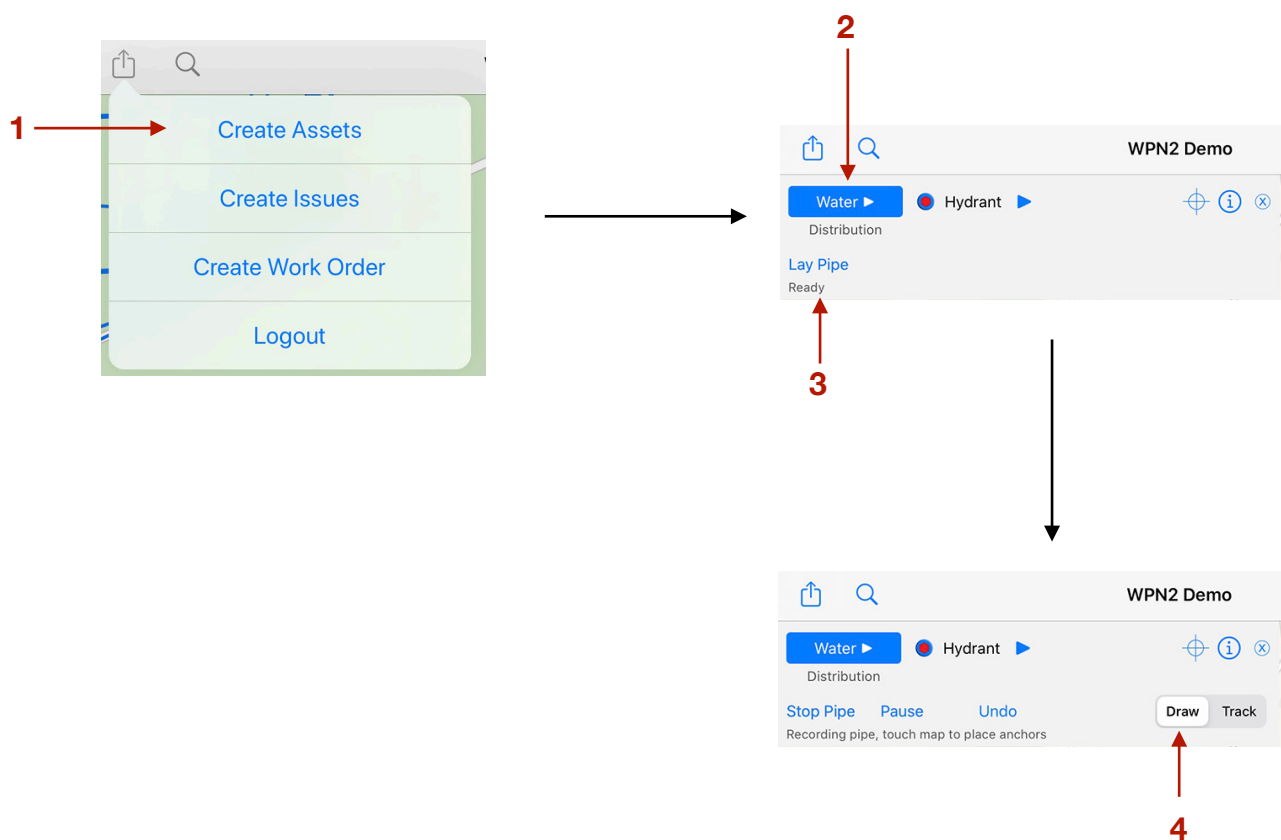


WPN: Laying New Pipe by Drawing

You can draw pipe on the screen easily using your finger or Apple Pencil (see the tutorial, Using an Apple Pencil with WPN).

Step 1: Set up for Laying New Pipe

1. Tap on the **Action** button in the top left of the **Map** view, then tap **Create Assets**.
2. In the **Create Assets** view, select the infrastructure by tapping on the Infrastructure button until the infrastructure you want, like water or storm, is shown.
3. Tap **Lay Pipe** to start laying pipe on the map.
4. Tap **Draw** to select Drawing, if needed.



Step 2: Drawing the New Pipe

5. Zoom in on the map, by spreading with finger and thumb, to a comfortable scale. Then *touch** the location where you want to start the pipe. The first pipe anchor will be visibly placed on the map (*a *touch* is a tap that stays on the map a little longer).
6. Continue touching the map to place more pipe anchors. The pipe is drawn for you, with straight line sections joining the anchors.
7. Tap **Pause** to temporarily stop laying pipe. You can place other assets anywhere on the map, such as valves, curb stops or hydrants. Tap **Resume** to continue laying pipe.
8. If you make a mistake, tap **Undo** to delete the last pipe anchor and section.
9. Tap **Stop Pipe** when you have completed drawing the pipe.

