

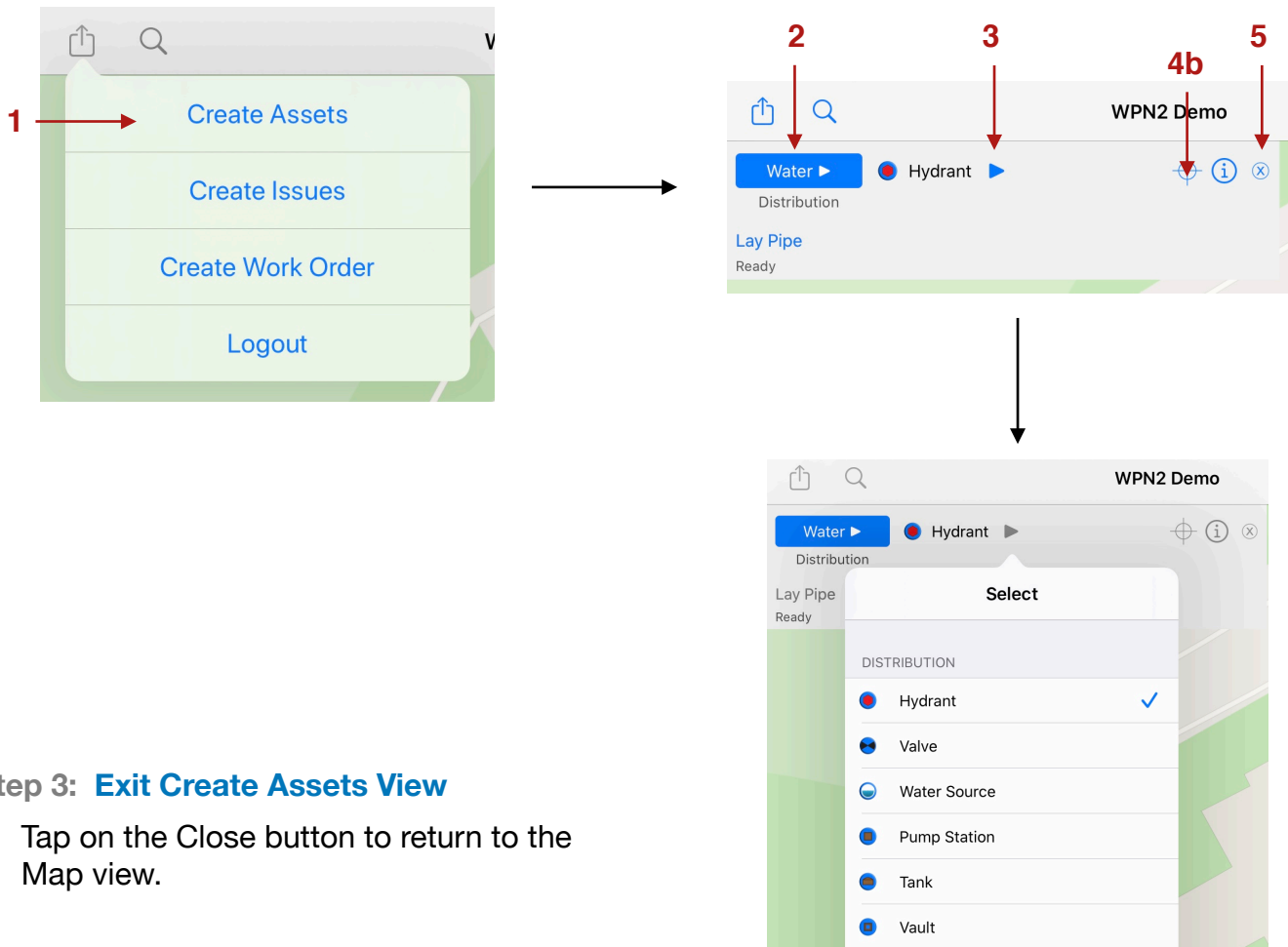
WPN: Creating Assets

Step 1: Open the Create Assets View

1. In the Map view, tap the Action button in the top left corner and tap **Create Assets** to show the Create Assets view.

Step 2: Select the Asset to Place on the Map

2. Select an infrastructure by tapping on the Infrastructure button until the infrastructure you want, like water or storm, is shown.
3. Select an asset type by tapping on the blue arrow next to the asset type. Tap on the asset type you want to place on the map.
4. To place the new asset on the map:
 - a. Tap a location on the map (you can reposition the asset later in Step 4); or
 - b. Tap the My Location button to place the asset where you are standing

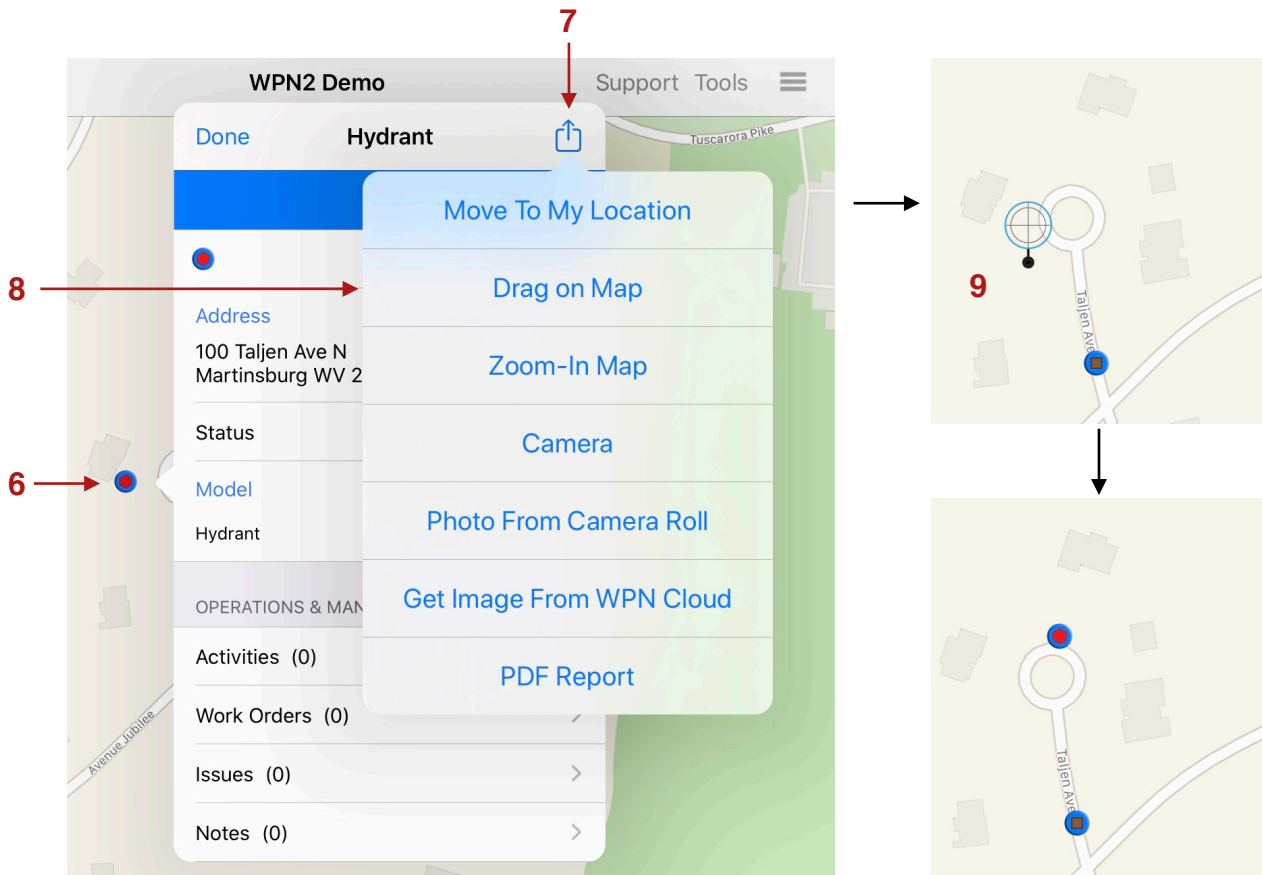


Step 3: Exit Create Assets View

5. Tap on the Close button to return to the Map view.

Step 4: Reposition an Asset

6. Tap on the map icon of the asset you want to reposition.
7. Tap on the Action button in the Asset view.
8. Tap **Drag on Map**. (Alternatively, you may tap **Move To My Location** and the asset will be moved to where you are standing.)
9. Use your finger or Apple Pencil to drag the crosshairs to the new desired position.



Note: See the tutorials “Laying New Pipe by Tracking” and “Laying New Pipe by Drawing” for laying new pipe.