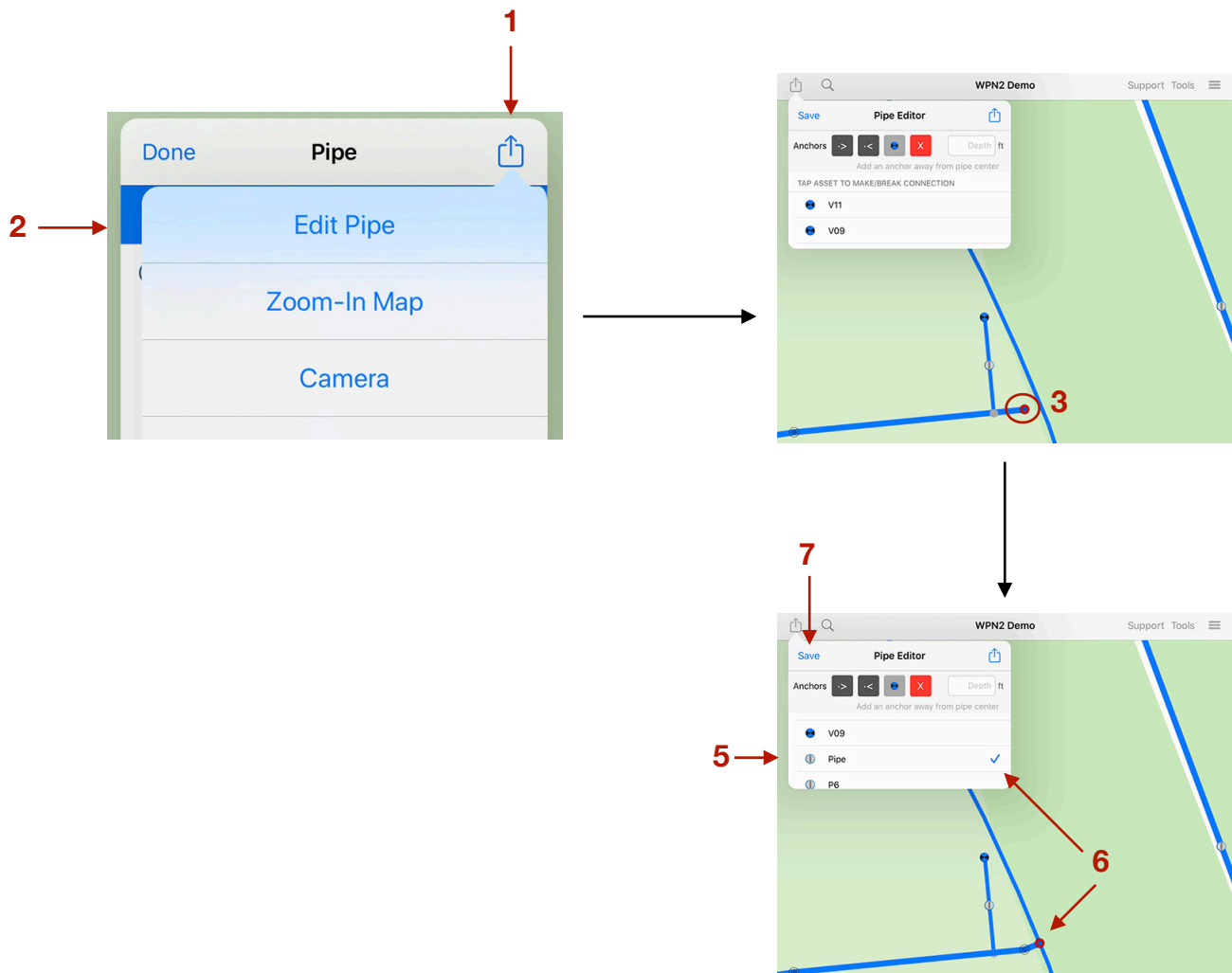


# WPN: Connecting Pipes to Other Pipes and Assets

## Connecting a Pipe to Another Pipe

1. Tap on the Pipe icon and then tap on the Action button.
2. Tap on the **Edit Pipe** button and zoom in as far as you can at the point where you would like the pipes to connect.
3. Tap on the pipe anchor closest to the connection point where you would like the pipes to connect. The selected anchor will turn red.
4. In the Pipe Editor view, you will see a list of the closest pipes and assets to the selected anchor.
5. Tap on the pipe that you want to connect to and the pipe will be extended to that pipe.
6. A new anchor will appear at the connection point and a blue check will appear next to the pipe you have connected to. *Note: The pipe will automatically join at a right angle. If you want to change this, just drag the selected anchor to the position on the pipe where you want the pipes to join.*
7. Tap **Save** to save the new anchor. All pipe to pipe connections will appear as silver nodes.



## Connecting a Pipe to an Asset

1. Tap on the Pipe icon and then tap on the Action button.
2. Tap on the **Edit Pipe** button and zoom in as far as you can at the point where you would like the pipes to connect.
3. Tap on the pipe anchor closest to the asset you would like to connect the pipe to. The selected anchor will turn red.
4. In the Pipe Editor view, you will see a list of the closest assets to the selected anchor.
5. Tap on the asset that you want to connect to and you will see an option to **Move the Pipe Anchor** or **Move the Asset**.
6. A new anchor will appear at the connection point and a blue check will appear next to the asset you have connected to.
7. Tap **Save** to save the connection to the asset.

